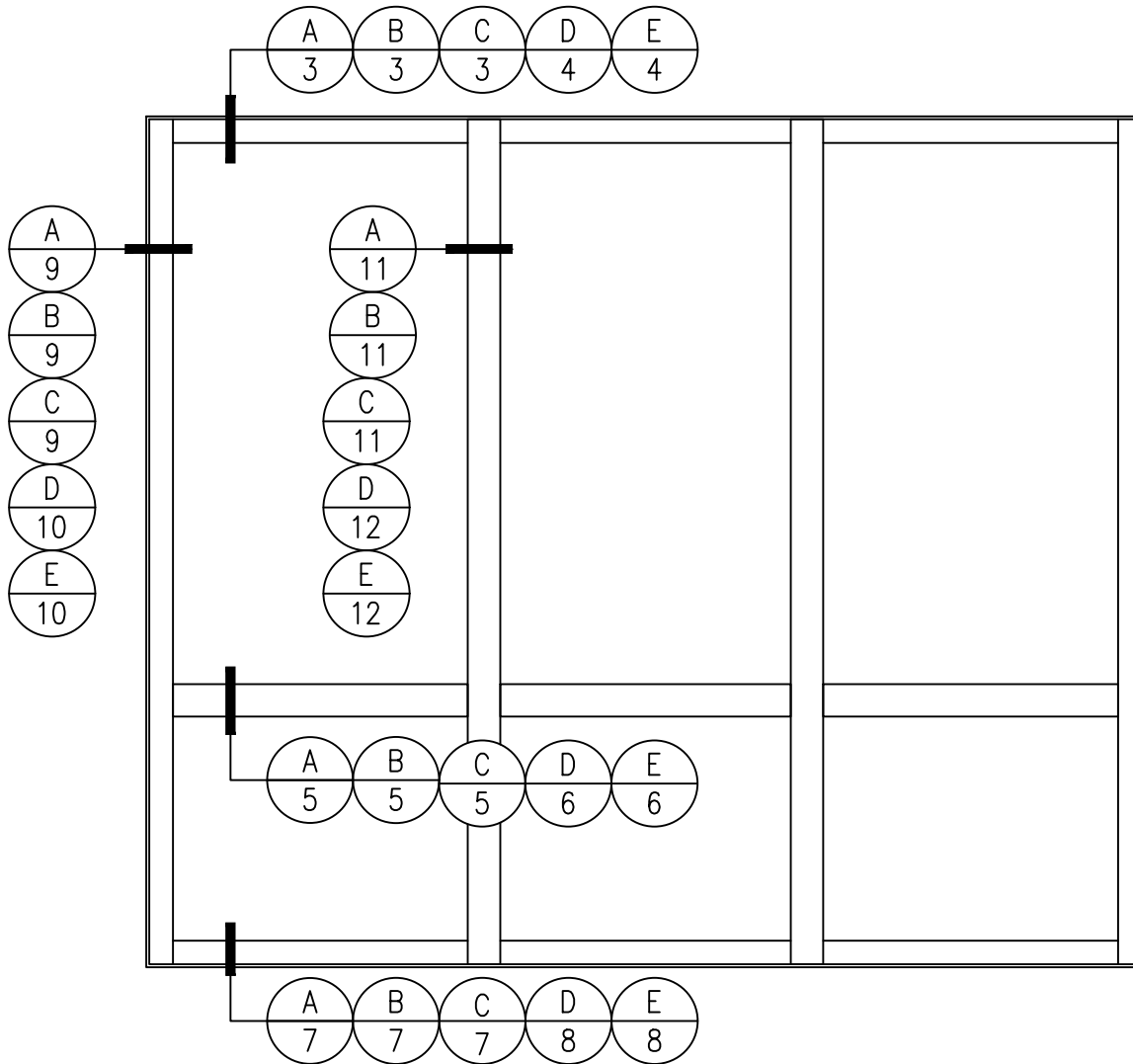


GPX BALLISTIC SERIES

60 MINUTE *FIRE RESISTIVE* BALLISTIC GPX WALL

GPX BALLISTIC SERIES *FIRE RESISTIVE* WALL WITH SUPERLITE II-XL 60



GLASS TYPE

- (A) SUPERLITE II-XL 60 WITH LEVEL 1-3 BALLISTIC GLASS
- (B) SUPERLITE II-XL 60 WITH LEVEL 4/6 BALLISTIC GLASS
- (C) SUPERLITE II-XL 60 WITH LEVEL 5 BALLISTIC GLASS
- (D) SUPERLITE II-XL 60 WITH LEVEL 7 BALLISTIC GLASS
- (E) SUPERLITE II-XL 60 WITH LEVEL 8 BALLISTIC GLASS

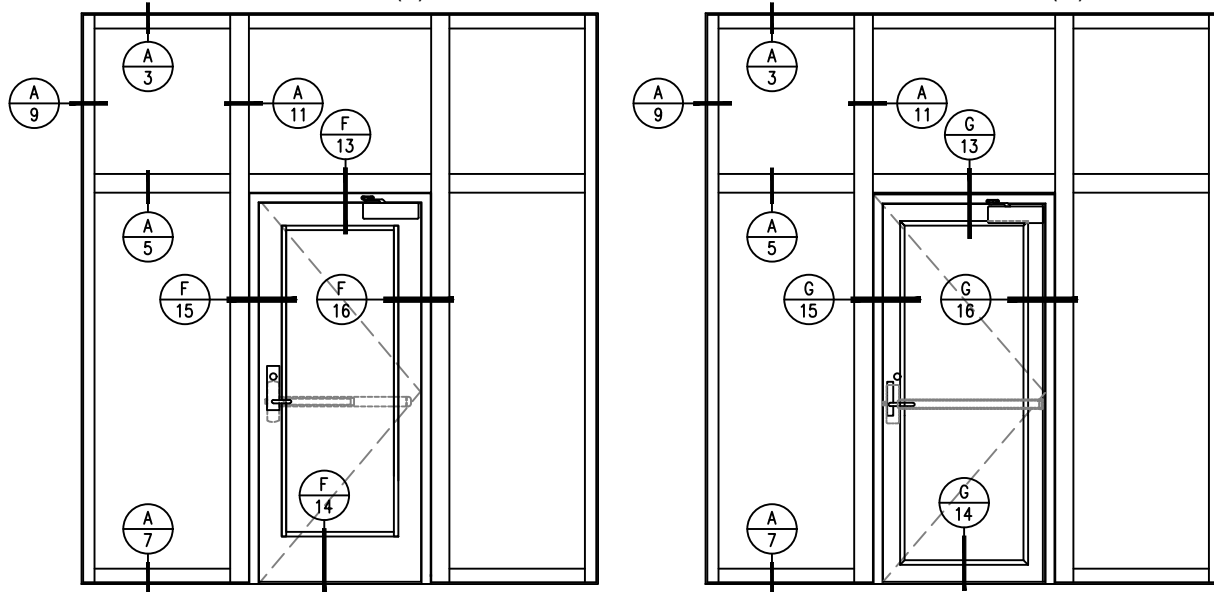
MAX. CV AREA PER INDIVIDUAL LITE: **4,952 SQ. IN.**

MAX. CV HEIGHT OR WIDTH PER INDIVIDUAL LITE: **124 IN.**

GPX BALLISTIC SERIES

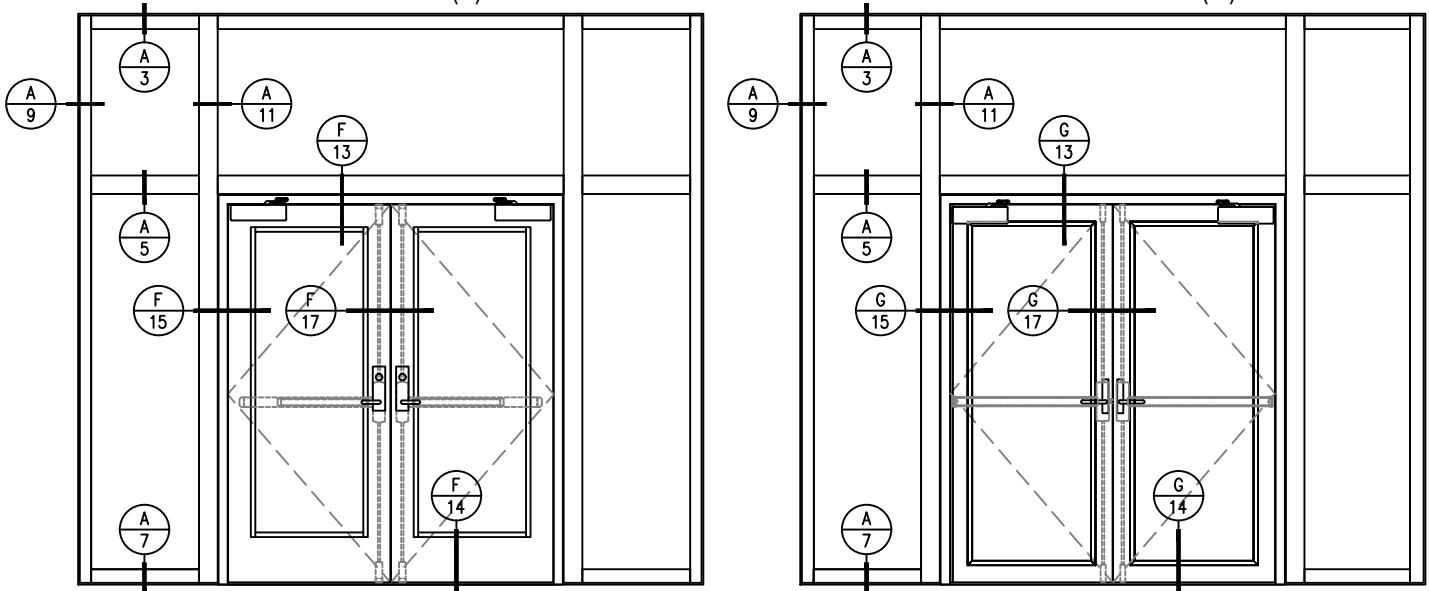
60 MINUTE *FIRE RESISTIVE* BALLISTIC SIDELITES/TRANSOMS WITH 60 MINUTE *TEMPERATURE RISE* BALLISTIC DOORS

GPX BALLISTIC SERIES *TEMPERATURE RISE* SINGLE DOOR WITH SUPERLITE II-XL 60 STANDARD (F) NARROW STYLE (G)



MAX. DOOR OPENING SIZE FOR
SINGLE DOOR: **54 IN. X 120 IN.**

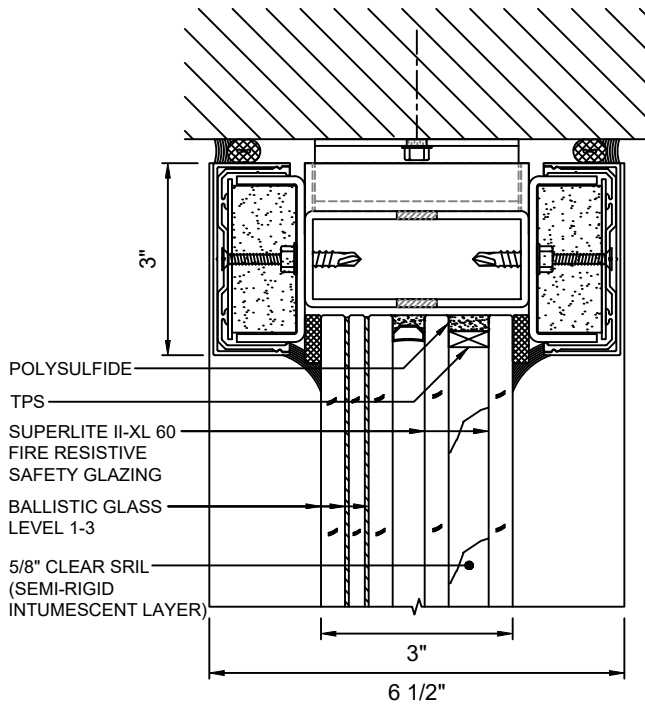
GPX BALLISTIC SERIES *TEMPERATURE RISE* PAIR DOOR WITH SUPERLITE II-XL 60 STANDARD (F) NARROW STYLE (G)



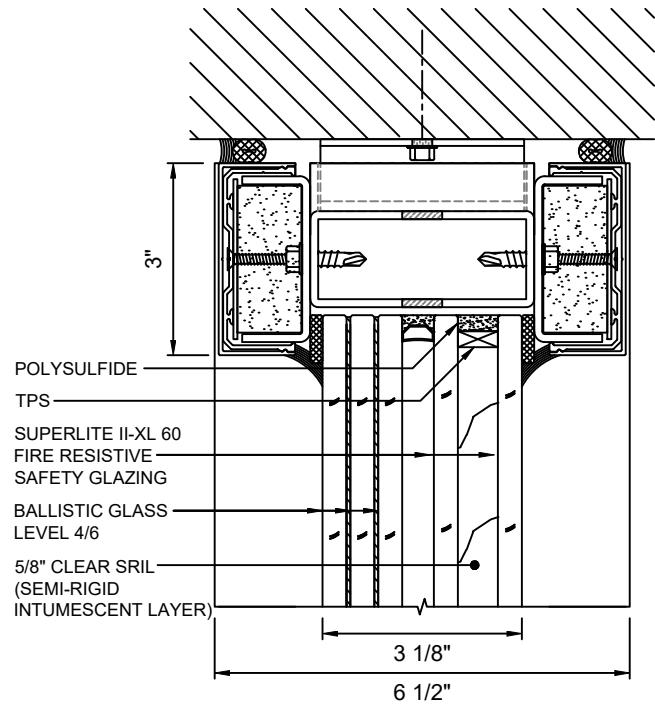
MAX. DOOR OPENING SIZE FOR
PAIR DOOR: **96 IN. X 120 IN.**

GPX BALLISTIC SERIES

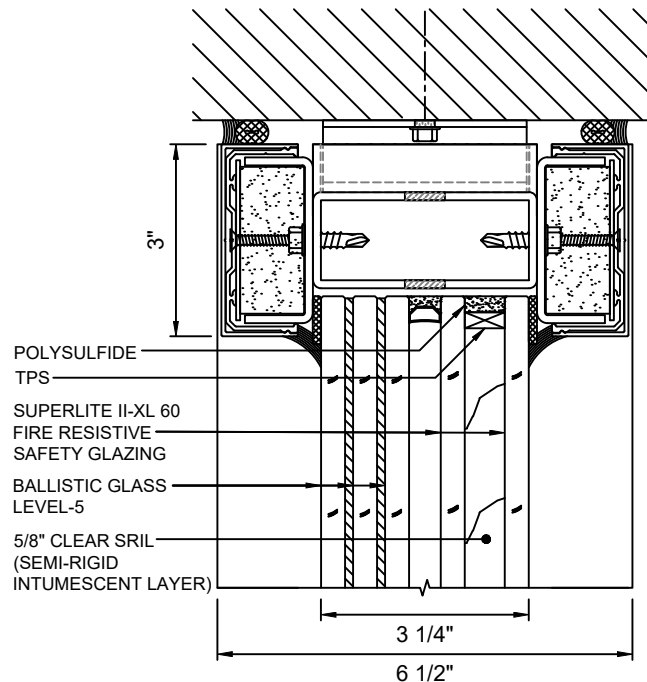
60 MINUTE FIRE RESISTIVE BALLISTIC GPX WALL



A
3 HEAD DETAIL
WITH SUPERLITE II-XL 60
WITH LEVEL 1-3 BALLISTIC
GLASS



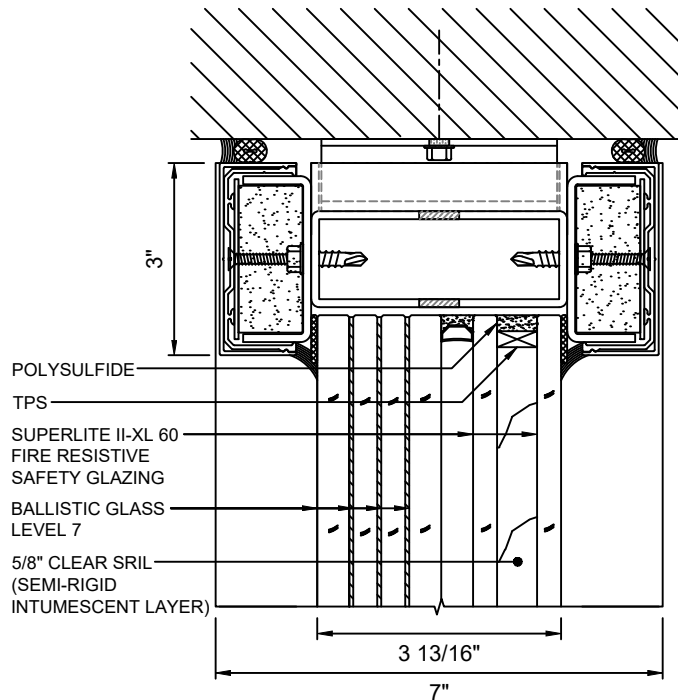
B
3 HEAD DETAIL
WITH SUPERLITE II-XL 60
WITH LEVEL 4/6 BALLISTIC
GLASS



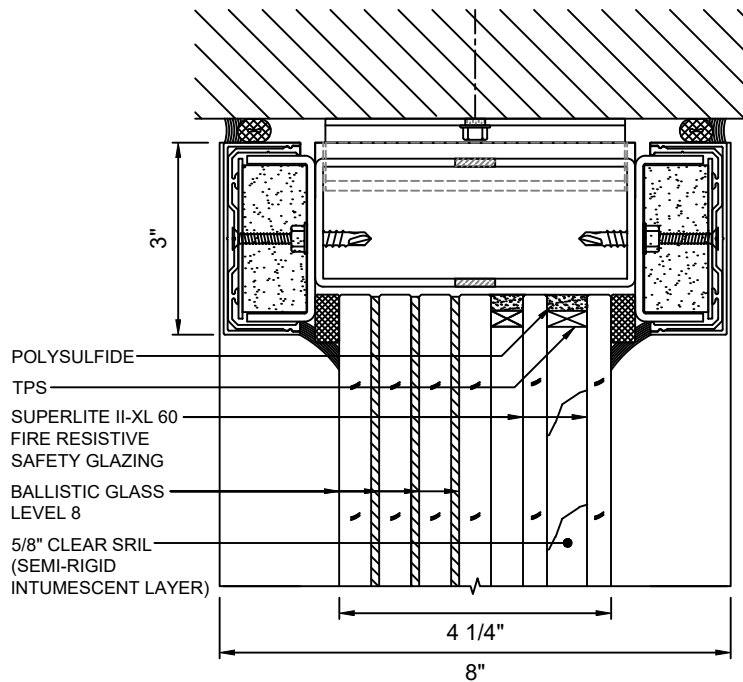
C
3 HEAD DETAIL
WITH SUPERLITE II-XL 60
WITH LEVEL 5 BALLISTIC
GLASS

GPX BALLISTIC SERIES

60 MINUTE *FIRE RESISTIVE* BALLISTIC GPX WALL



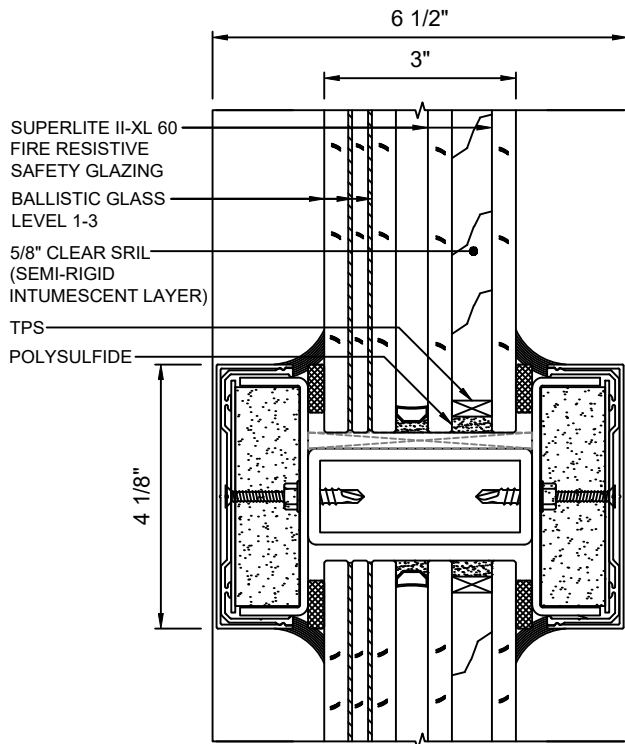
D
4
 HEAD DETAIL
 WITH **SUPERLITE II-XL 60**
 WITH **LEVEL 7 BALLISTIC**
GLASS



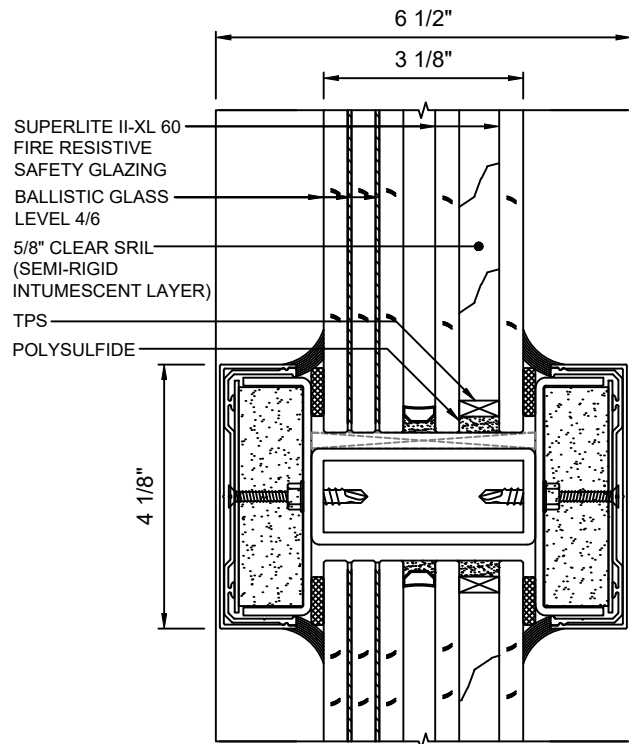
E
4
 HEAD DETAIL
 WITH **SUPERLITE II-XL 60**
 WITH **LEVEL 8 BALLISTIC**
GLASS

GPX BALLISTIC SERIES

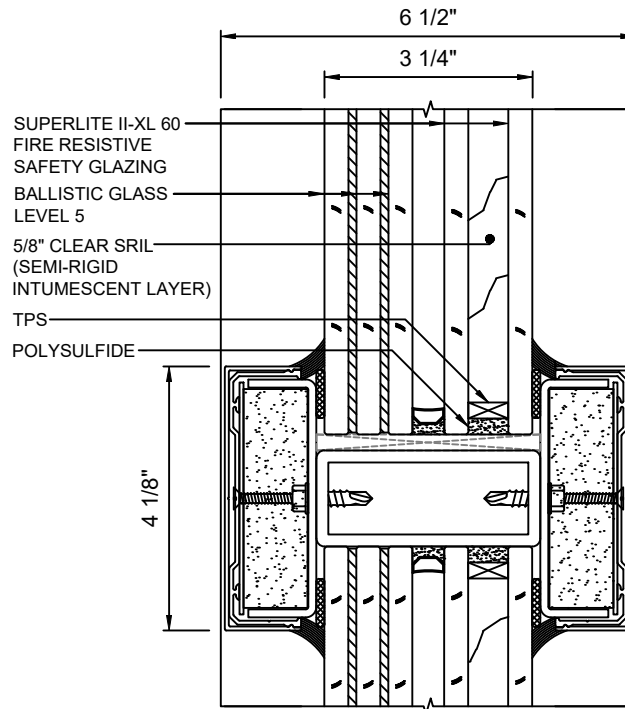
60 MINUTE FIRE RESISTIVE BALLISTIC GPX WALL



A
5 HORIZONTAL MULLION
WITH **SUPERLITE II-XL 60**
WITH LEVEL 1-3 BALLISTIC GLASS



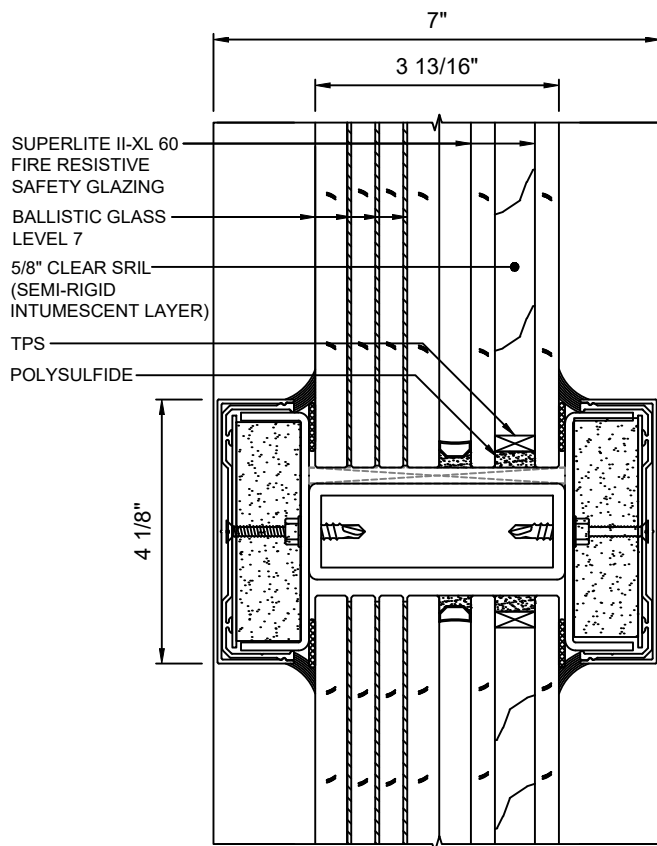
B
5 HORIZONTAL MULLION
WITH **SUPERLITE II-XL 60**
WITH LEVEL 4/6 BALLISTIC GLASS



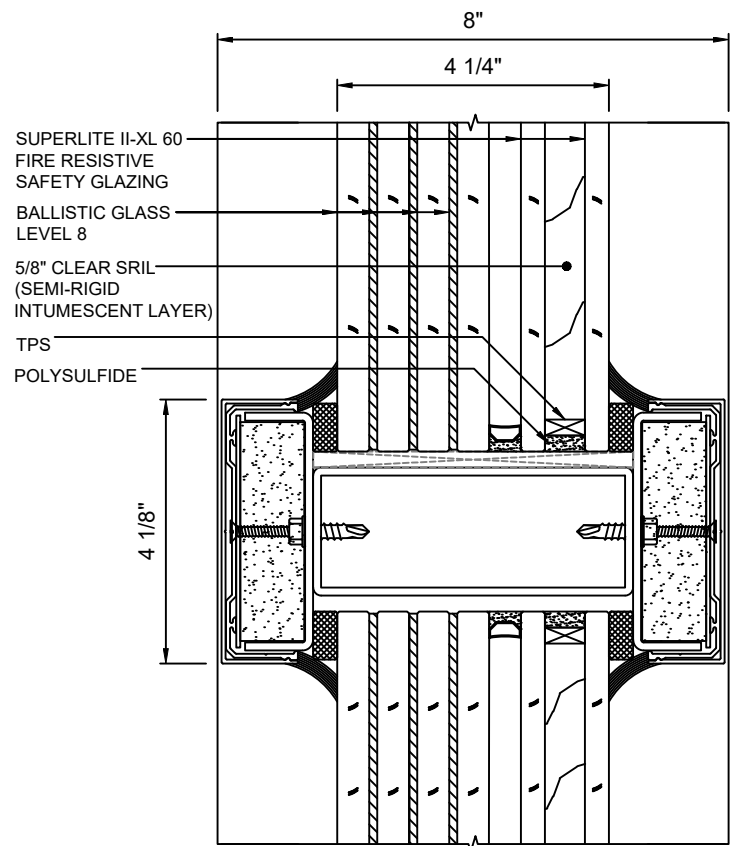
C
5 HORIZONTAL MULLION
WITH **SUPERLITE II-XL 60**
WITH LEVEL 5 BALLISTIC GLASS

GPX BALLISTIC SERIES

60 MINUTE *FIRE RESISTIVE* BALLISTIC GPX WALL



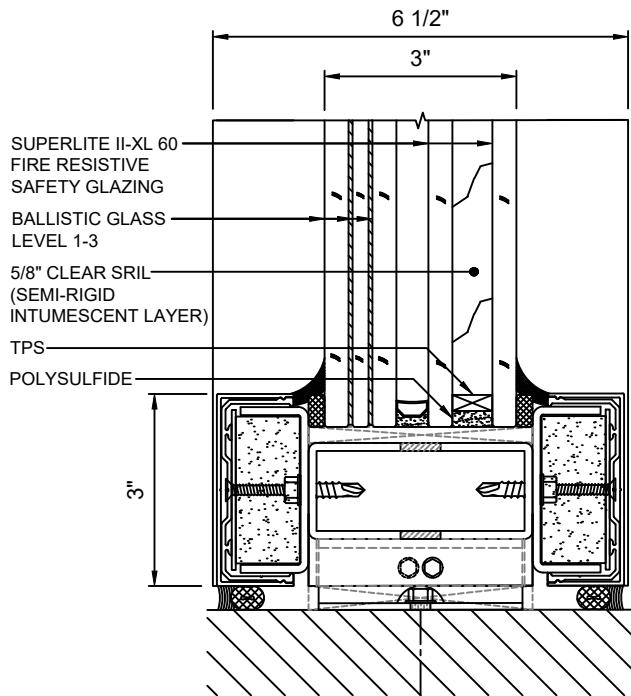
D
6 HORIZONTAL MULLION
WITH **SUPERLITE II-XL 60**
WITH **LEVEL 7 BALLISTIC GLASS**



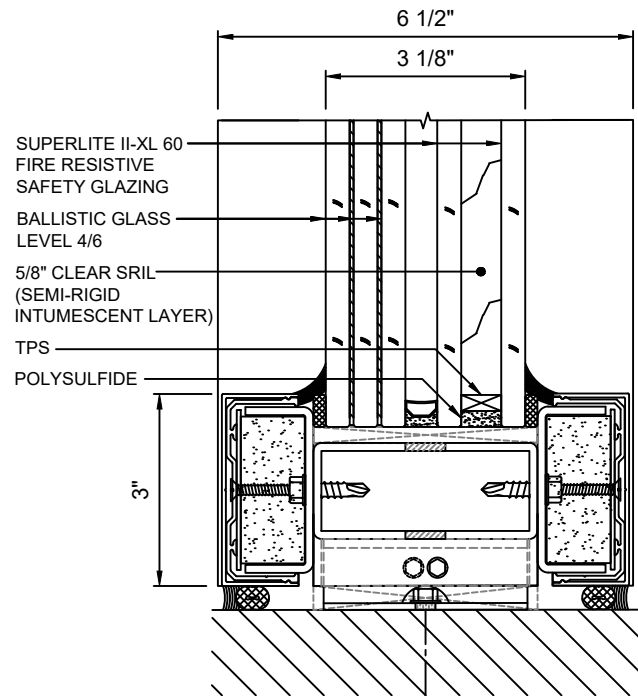
E
6 HORIZONTAL MULLION
WITH **SUPERLITE II-XL 60**
WITH **LEVEL 8 BALLISTIC GLASS**

GPX BALLISTIC SERIES

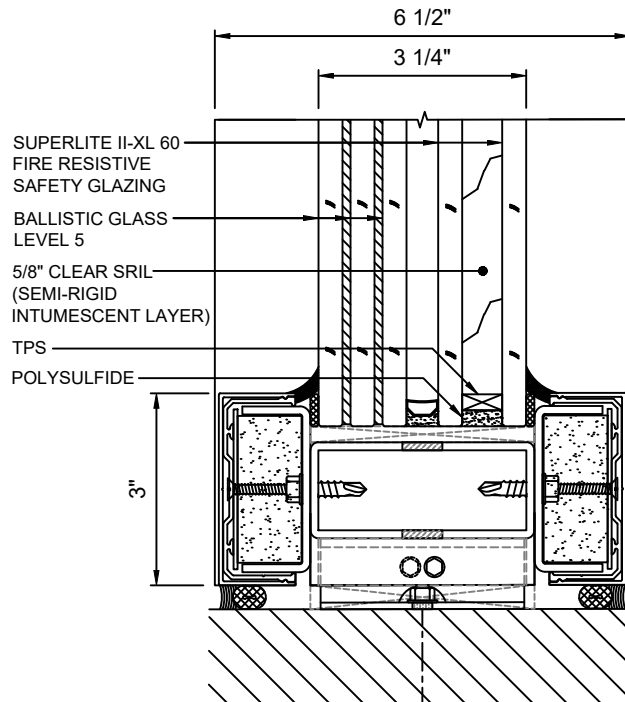
60 MINUTE FIRE RESISTIVE BALLISTIC GPX WALL



A
7 SILL DETAIL
WITH **SUPERLITE II-XL 60**
WITH LEVEL 1-3 BALLISTIC GLASS



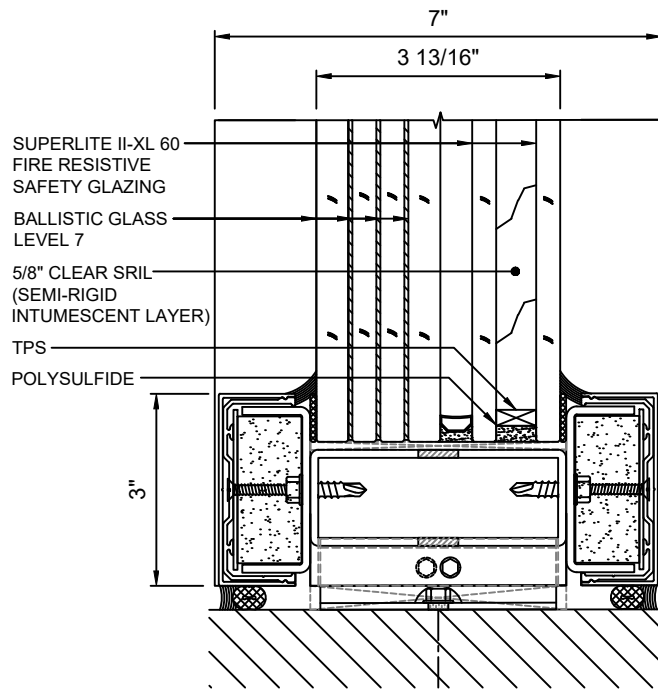
B
7 SILL DETAIL
WITH **SUPERLITE II-XL 60**
WITH LEVEL 4/6 BALLISTIC GLASS



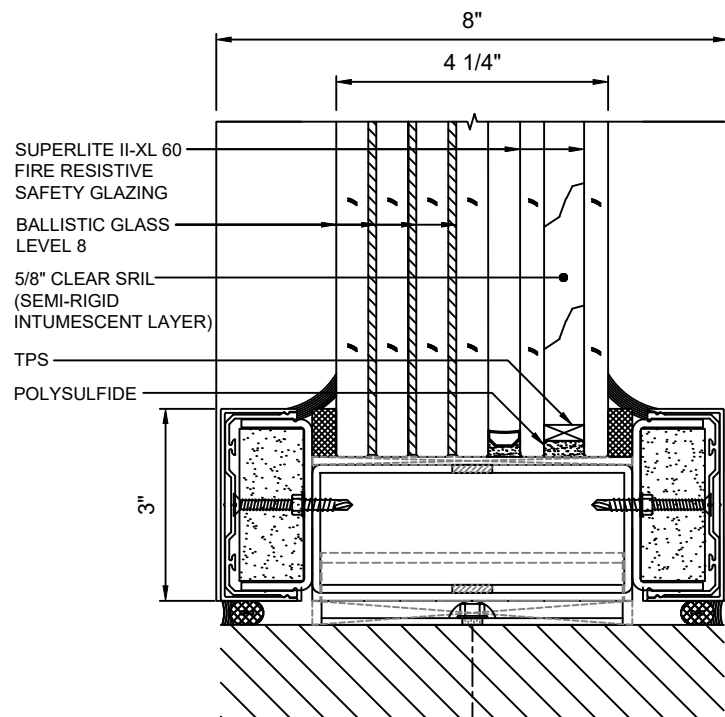
C
7 SILL DETAIL
WITH **SUPERLITE II-XL 60**
WITH LEVEL 5 BALLISTIC GLASS

GPX BALLISTIC SERIES

60 MINUTE *FIRE RESISTIVE* BALLISTIC GPX WALL



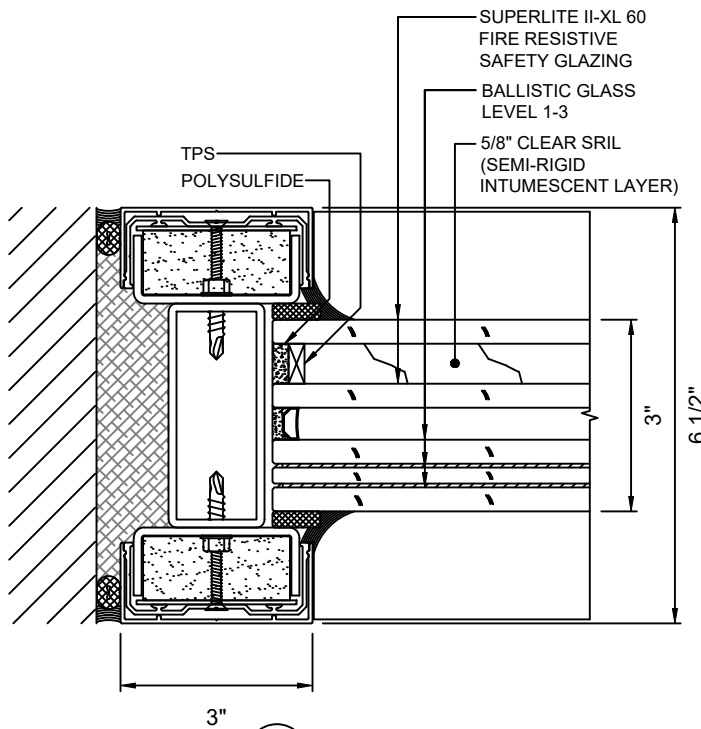
(D) SILL DETAIL
8 WITH **SUPERLITE II-XL 60**
WITH LEVEL 7 BALLISTIC GLASS



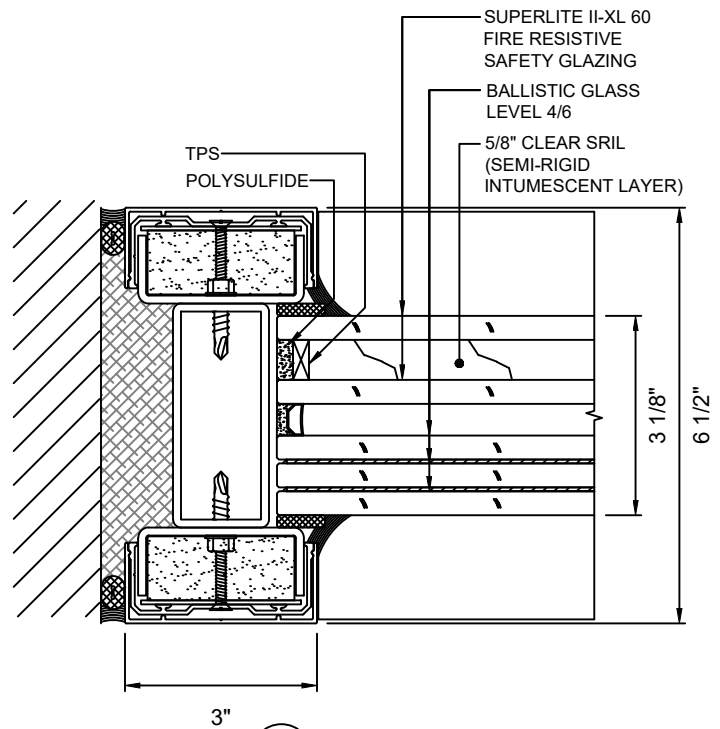
(E) SILL DETAIL
8 WITH **SUPERLITE II-XL 60**
WITH LEVEL 8 BALLISTIC GLASS

GPX BALLISTIC SERIES

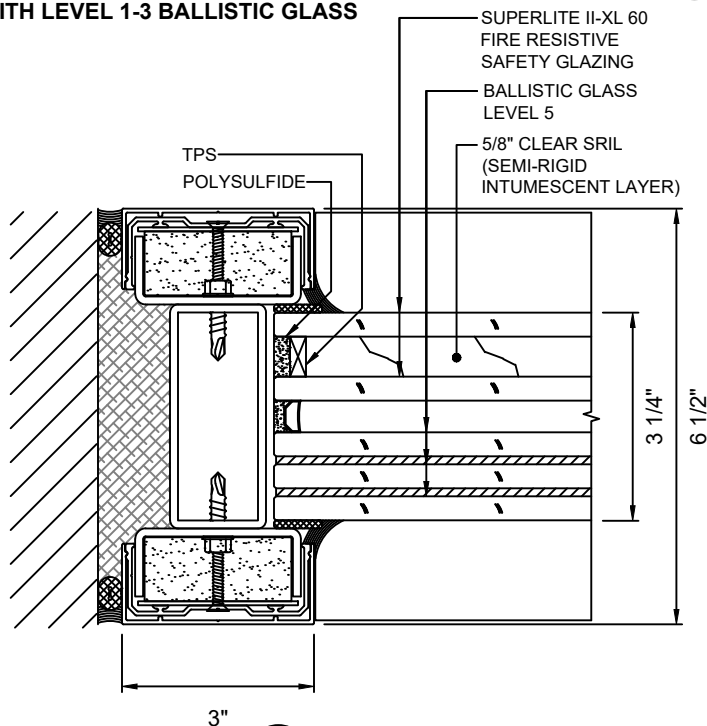
60 MINUTE FIRE RESISTIVE BALLISTIC GPX WALL



A
9 JAMB DETAIL
WITH SUPERLITE II-XL 60
WITH LEVEL 1-3 BALLISTIC GLASS



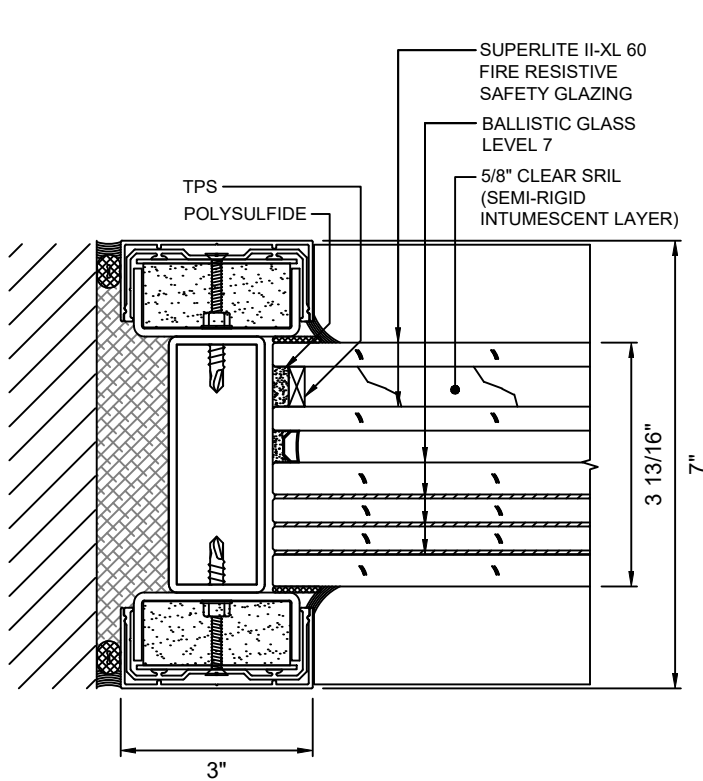
B
9 JAMB DETAIL
WITH SUPERLITE II-XL 60
WITH LEVEL 4/6 BALLISTIC GLASS



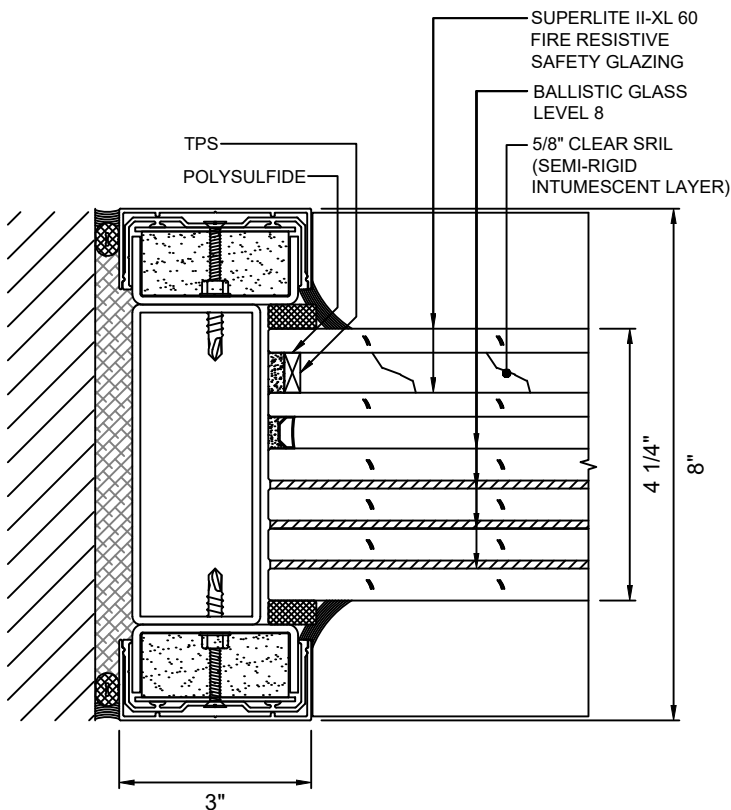
C
9 JAMB DETAIL
WITH SUPERLITE II-XL 60
WITH LEVEL 5 BALLISTIC GLASS

GPX BALLISTIC SERIES

60 MINUTE *FIRE RESISTIVE* BALLISTIC GPX WALL



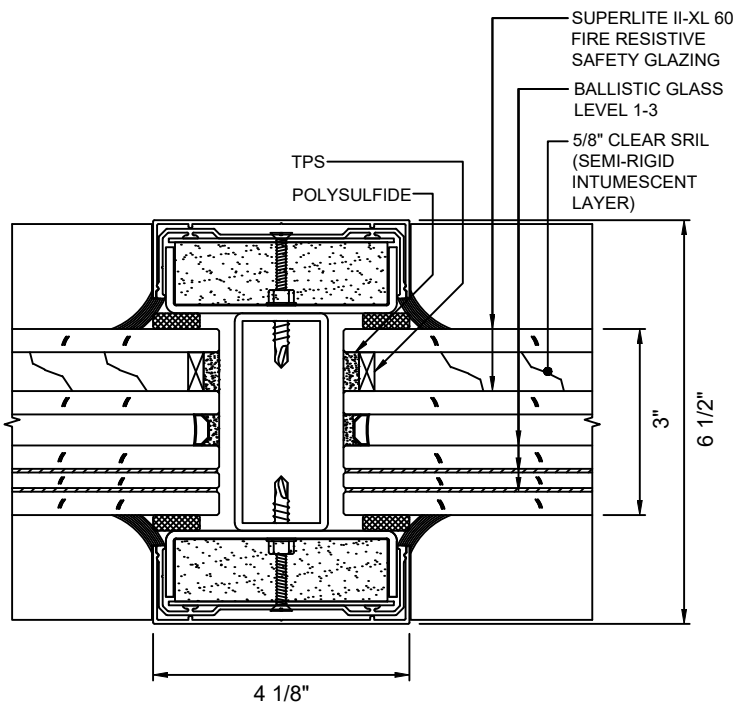
D
10 JAMB DETAIL
WITH **SUPERLITE II-XL 60**
WITH **LEVEL 7 BALLISTIC GLASS**



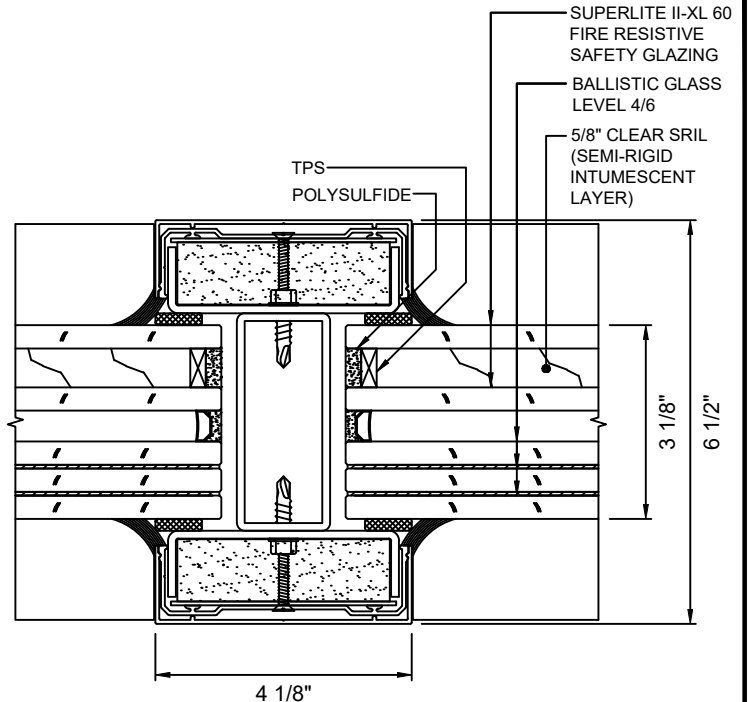
E
10 JAMB DETAIL
WITH **SUPERLITE II-XL 60**
WITH **LEVEL 8 BALLISTIC GLASS**

GPX BALLISTIC SERIES

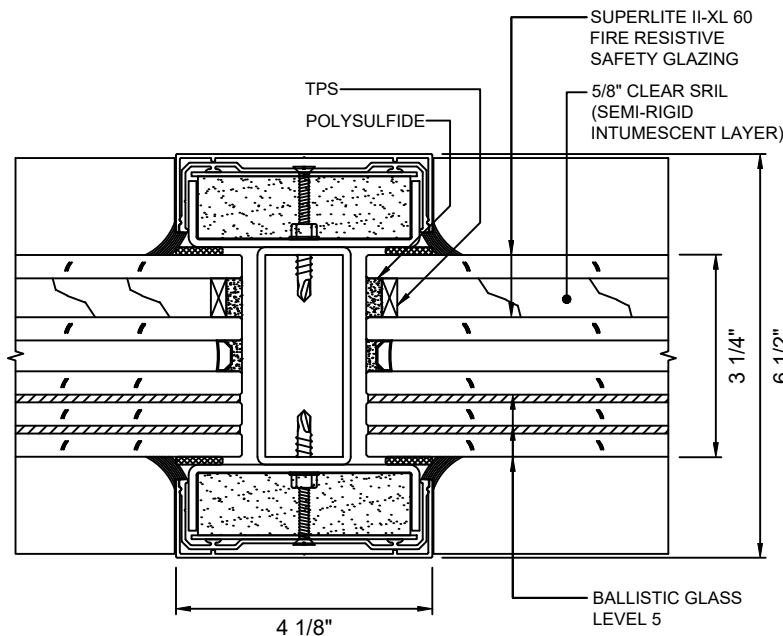
60 MINUTE FIRE RESISTIVE BALLISTIC GPX WALL



A
11 VERTICAL MULLION DETAIL
WITH SUPERLITE II-XL 60
WITH LEVEL 1-3 BALLISTIC GLASS



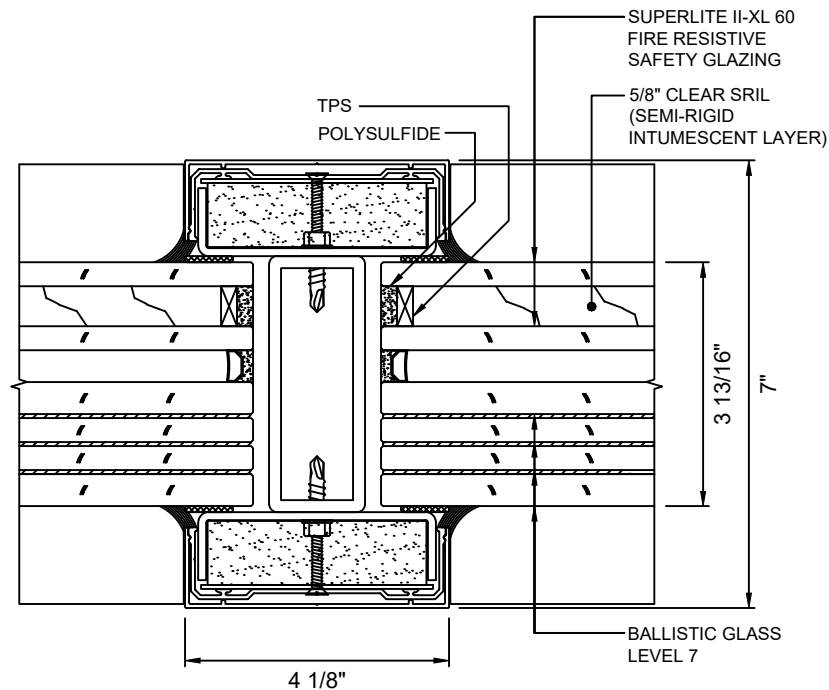
B
11 VERTICAL MULLION DETAIL
WITH SUPERLITE II-XL 60
WITH LEVEL 4/6 BALLISTIC GLASS



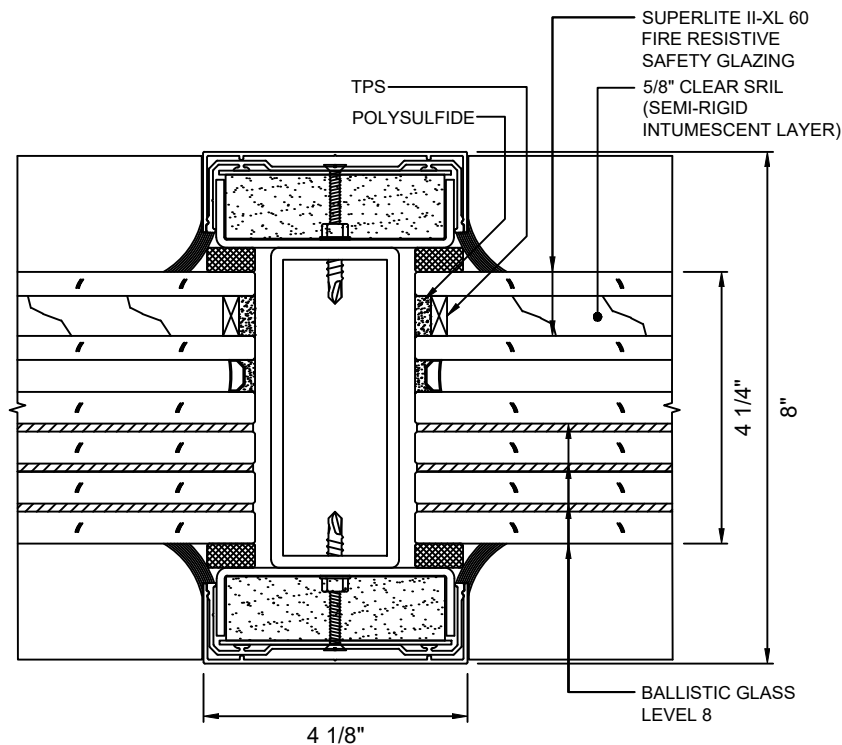
C
11 VERTICAL MULLION DETAIL
WITH SUPERLITE II-XL 60
WITH LEVEL 5 BALLISTIC GLASS

GPX BALLISTIC SERIES

60 MINUTE FIRE RESISTIVE BALLISTIC GPX WALL



D
12 VERTICAL MULLION DETAIL
WITH SUPERLITE II-XL 60
WITH LEVEL 7 BALLISTIC GLASS



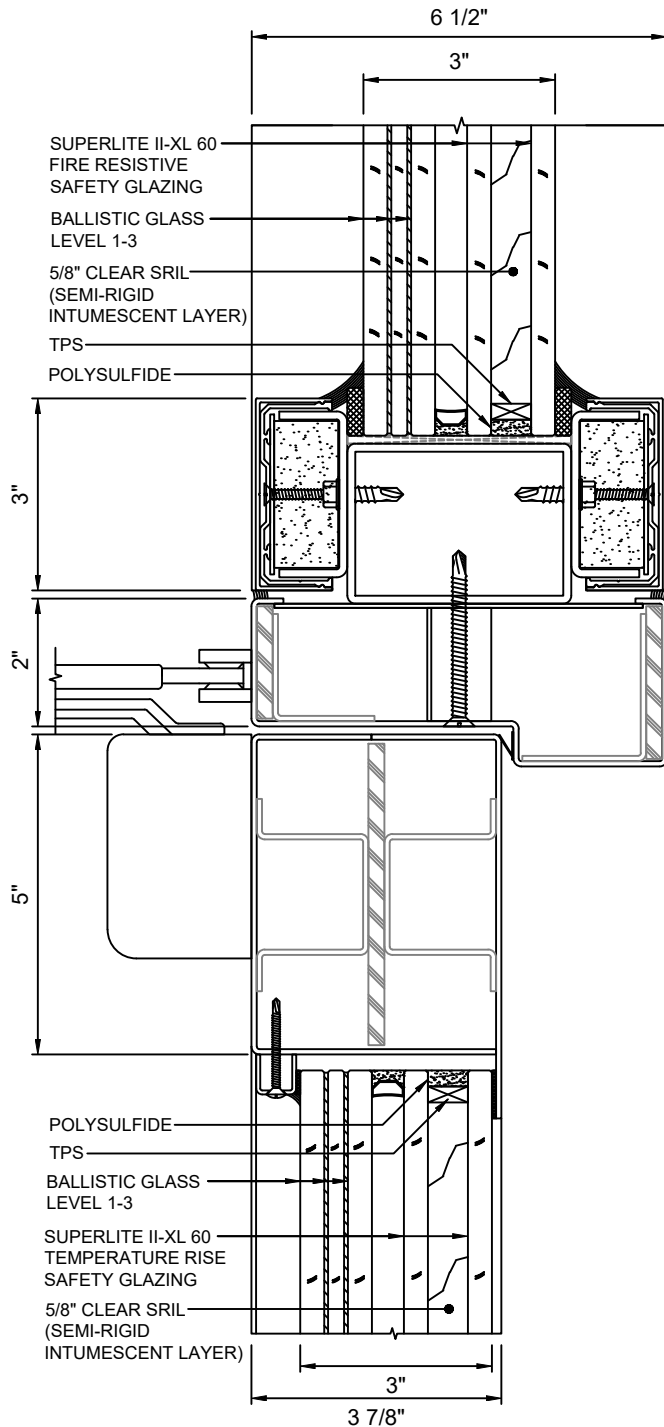
E
12 VERTICAL MULLION DETAIL
WITH SUPERLITE II-XL 60
WITH LEVEL 8 BALLISTIC GLASS

GPX BALLISTIC SERIES

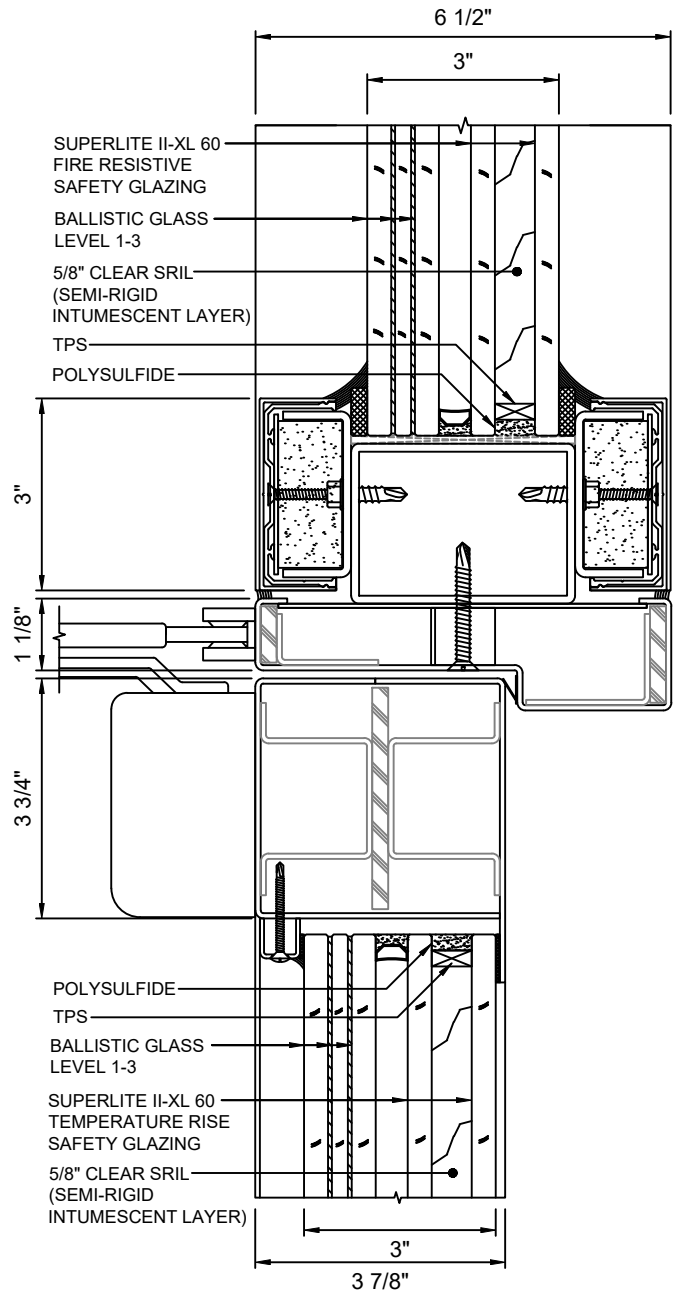
60 MINUTE FIRE RESISTIVE BALLISTIC SIDELITES/TRANSOMS WITH 60 MINUTE TEMPERATURE RISE BALLISTIC DOORS

GPX BALLISTIC SERIES DOOR STANDARD

GPX BALLISTIC SERIES DOOR NARROW STYLE



F
13 DOOR TOP RAIL - STANDARD
WITH SUPERLITE II-XL 60
WITH LEVEL 1-3 BALLISTIC
GLASS



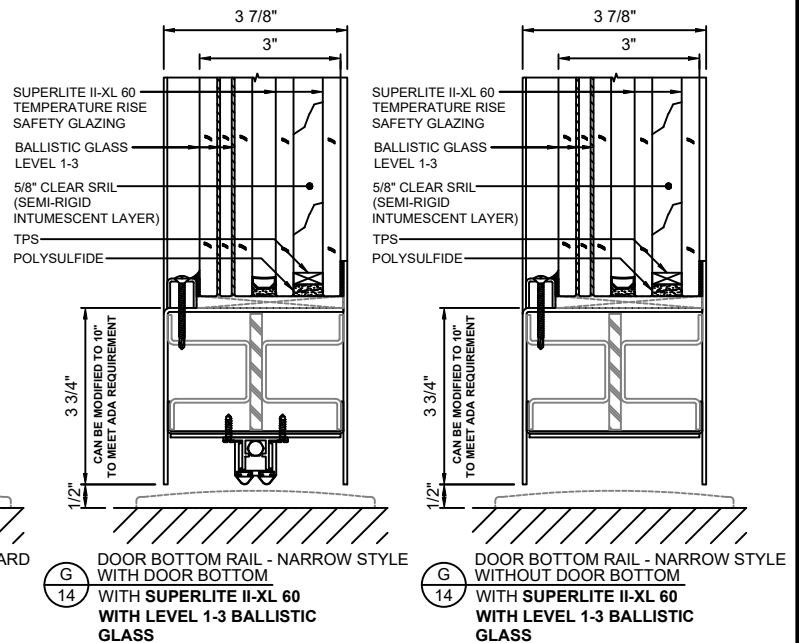
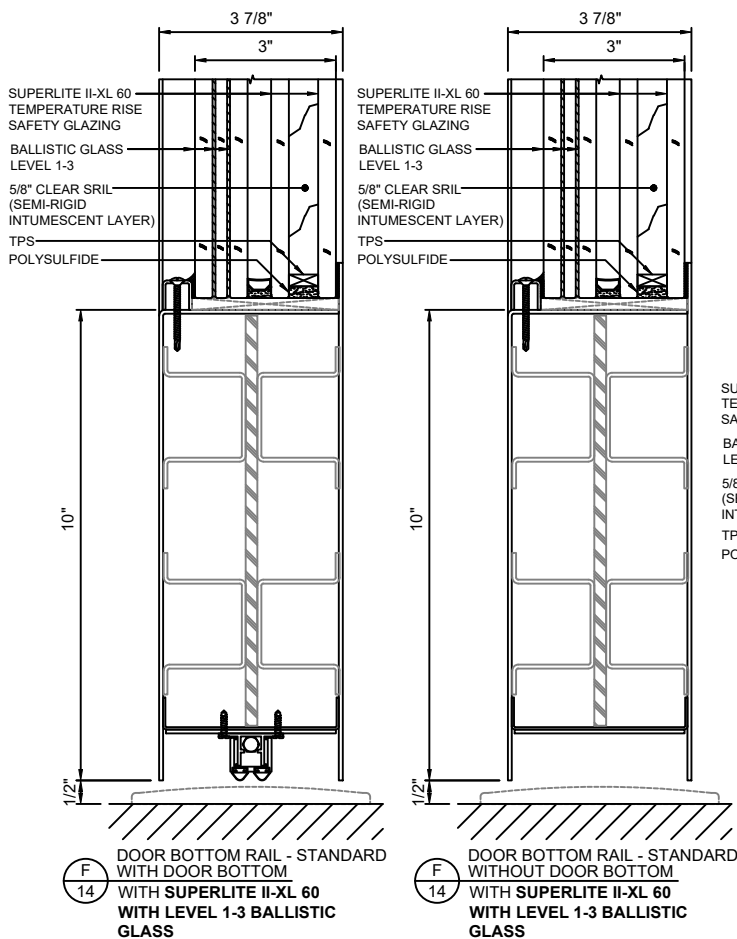
G
13 DOOR TOP RAIL - NARROW STYLE
WITH SUPERLITE II-XL 60
WITH LEVEL 1-3 BALLISTIC
GLASS

GPX BALLISTIC SERIES

60 MINUTE FIRE RESISTIVE BALLISTIC SIDELITES/TRANSOMS WITH 60 MINUTE TEMPERATURE RISE BALLISTIC DOORS

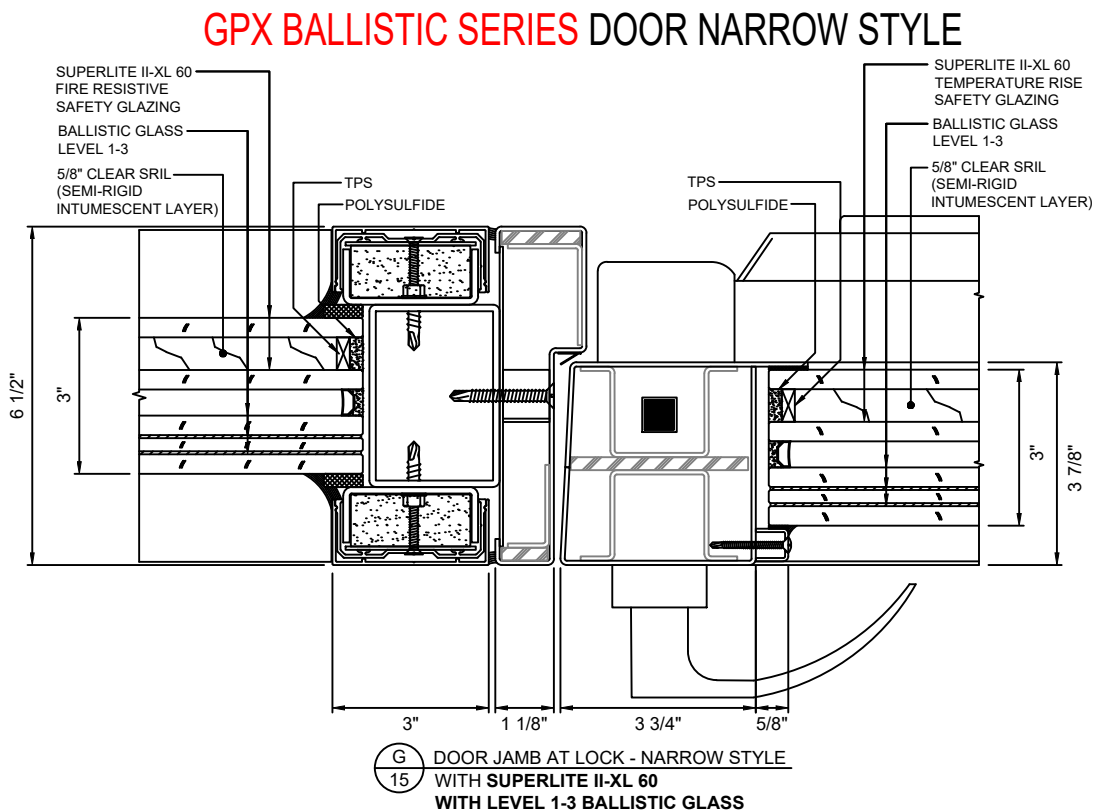
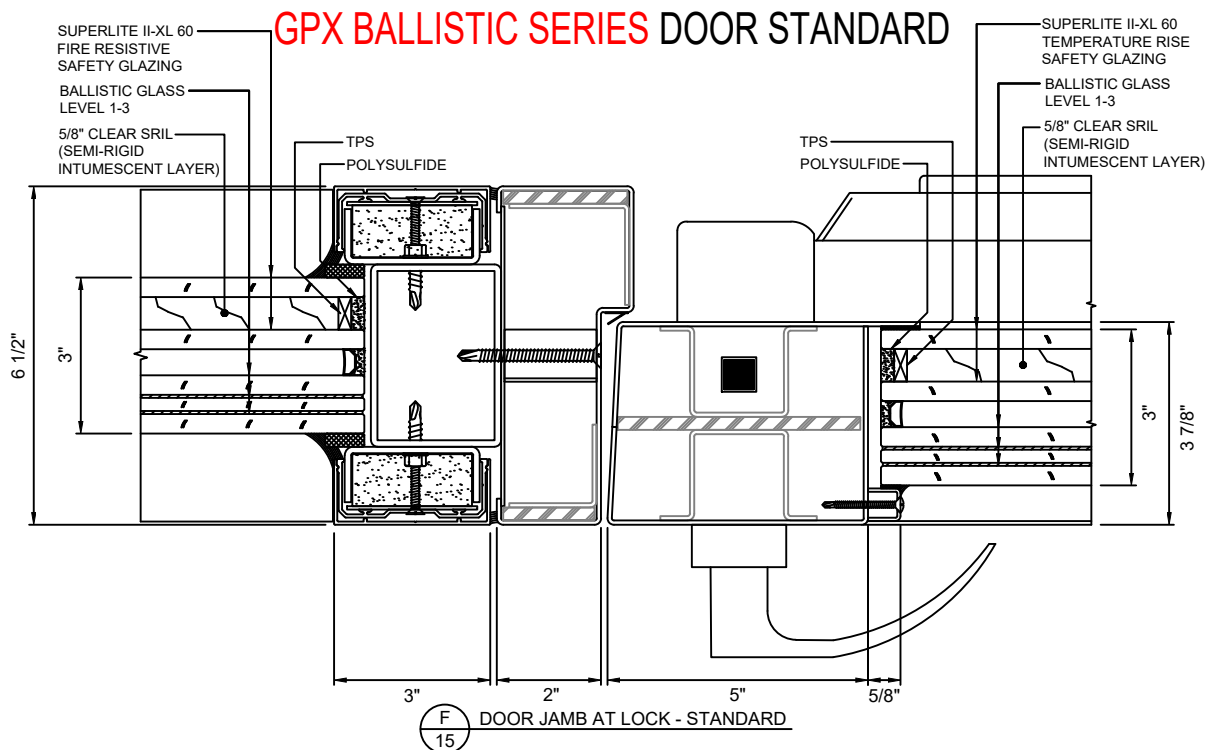
GPX BALLISTIC SERIES DOOR STANDARD WITH & WITHOUT DOOR BOTTOM

GPX BALLISTIC SERIES DOOR NARROW STYLE WITH & WITHOUT DOOR BOTTOM



GPX BALLISTIC SERIES

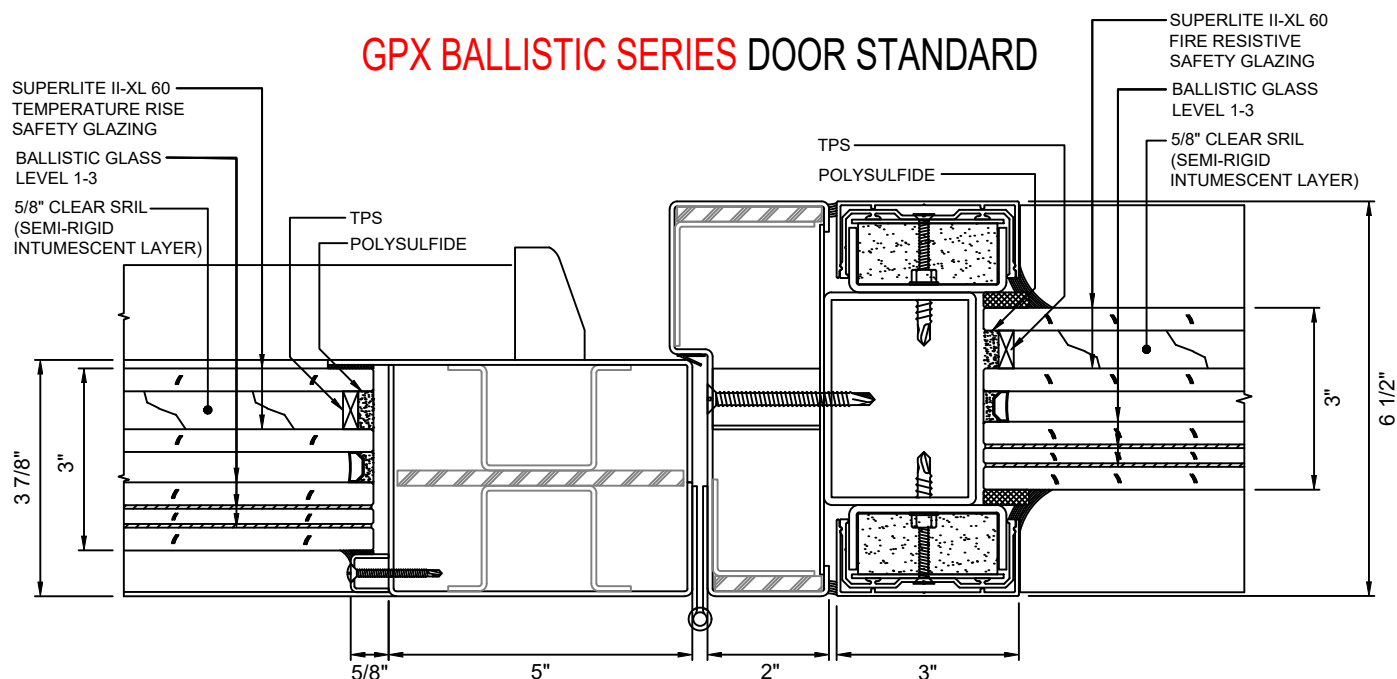
60 MINUTE FIRE RESISTIVE BALLISTIC SIDELITES/TRANSOMS WITH 60 MINUTE TEMPERATURE RISE BALLISTIC DOORS



GPX BALLISTIC SERIES

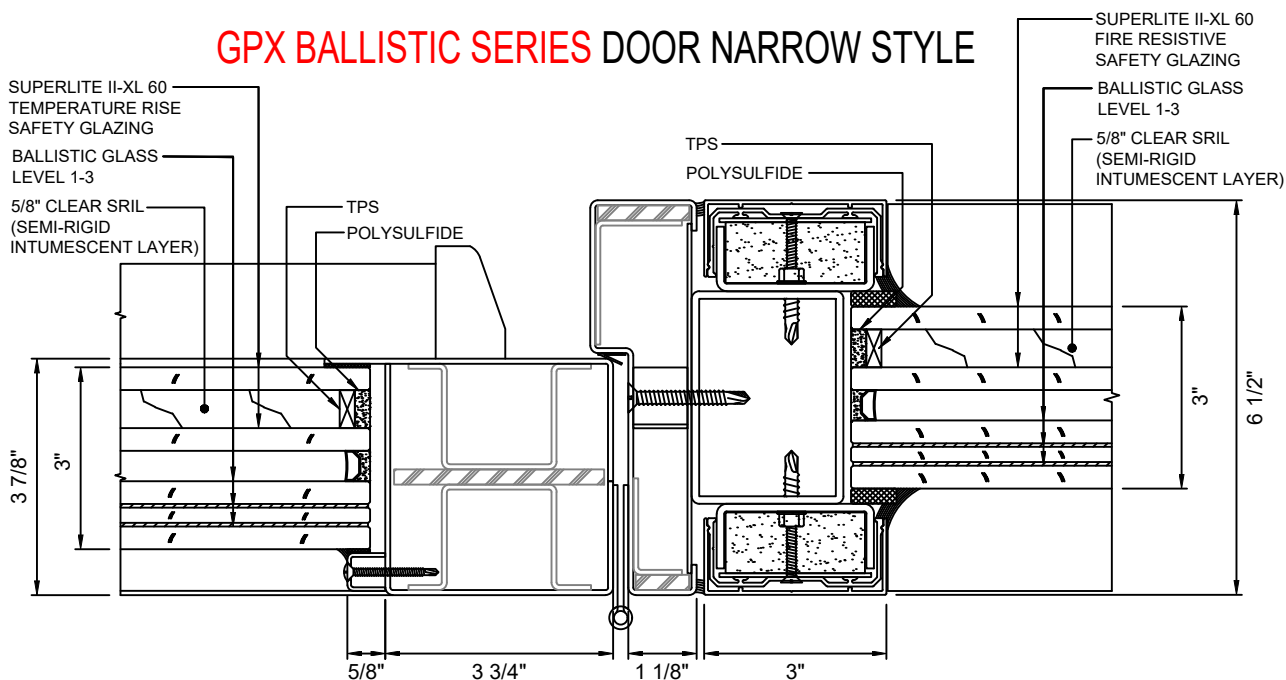
60 MINUTE FIRE RESISTIVE BALLISTIC SIDELITES/TRANSOMS WITH 60 MINUTE TEMPERATURE RISE BALLISTIC DOORS

GPX BALLISTIC SERIES DOOR STANDARD



(F)
16 DOOR JAMB AT HINGE - STANDARD
WITH SUPERLITE II-XL 60
WITH LEVEL 1-3 BALLISTIC GLASS

GPX BALLISTIC SERIES DOOR NARROW STYLE

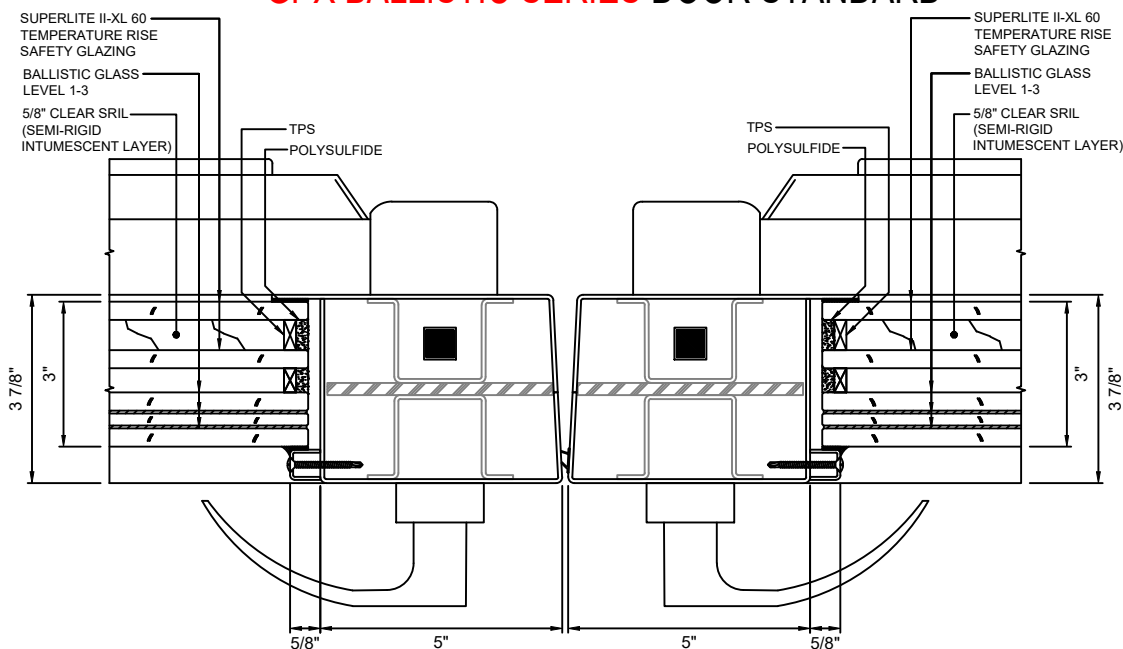


(G)
16 DOOR JAMB AT HINGE - NARROW STYLE
WITH SUPERLITE II-XL 60
WITH LEVEL 1-3 BALLISTIC GLASS

GPX BALLISTIC SERIES

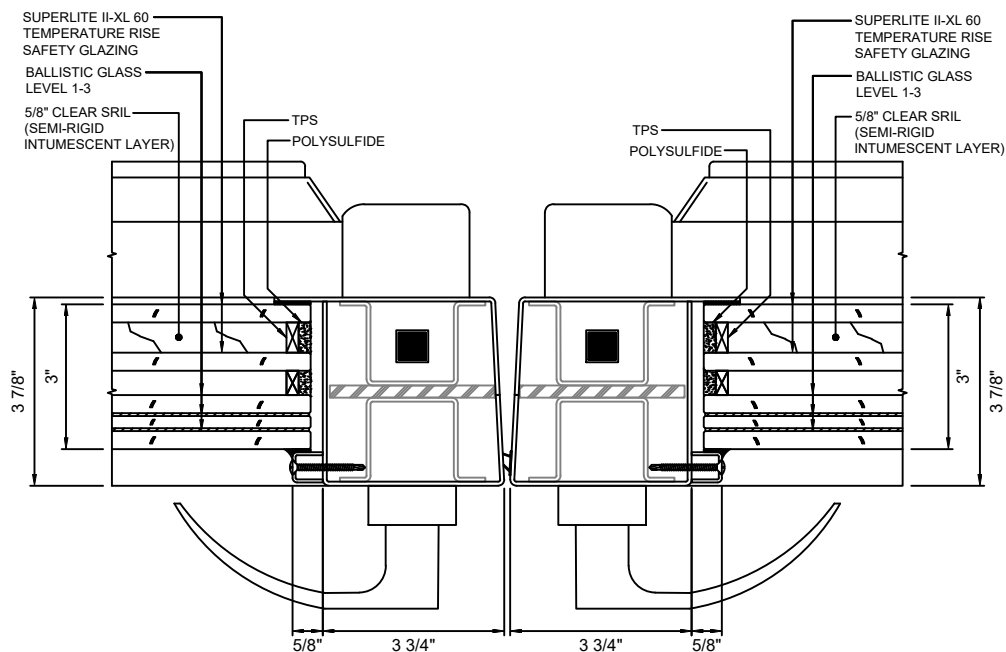
60 MINUTE FIRE RESISTIVE BALLISTIC SIDELITES/TRANSOMS WITH 60 MINUTE TEMPERATURE RISE BALLISTIC DOORS

GPX BALLISTIC SERIES DOOR STANDARD



F
17
MEETING STILES - STANDARD
WITH SUPERLITE II-XL 60
WITH LEVEL 1-3 BALLISTIC GLASS

GPX BALLISTIC SERIES DOOR NARROW STYLE



G
17
MEETING STILES - NARROW STYLE
WITH SUPERLITE II-XL 60
WITH LEVEL 1-3 BALLISTIC GLASS