

# SuperLite® II-XL 45

**20-45 Minute  
Fire Resistive Glazing**

## PRODUCT ADVANTAGES



- ▶ **Maximum fire and impact safety with hose stream and provides full radiant heat protection at better value than any clear 20-45 minute fire protective product.**
- ▶ Largest tested and approved sizes up to 4,952 in.<sup>2</sup> (3.19 m<sup>2</sup>) in standard 1 in. (25.4 mm) profile.
- ▶ Tint-free and optically clear. Perfect for property line requirements.
- ▶ Available in custom architectural make-ups, such as laminated glass and energy-saving insulated units.
- ▶ Can be customized to protect against forced entry, bullets, blast, hurricane, sound and more.
- ▶ Standard 5 year limited warranty.
- ▶ USA manufactured for fast lead times and competitive pricing.



Now available with Starphire Ultra-Clear® glass by Vitro

### Largest Sizes for Doors, Sidelites, Windows and Transoms

Fire Rating	Max. CV Area	Max. CV Width	Max. CV Height	Stops
All 20-45 minute applications	4,952 in. <sup>2</sup> (3.19 m <sup>2</sup> )	124 in. (3.15 m)	124 in. (3.15 m)	5/8 in. (16 mm)

1 in. stops recommended (25 mm). See [Quality and Construction Information for SAFTI FIRST® Fire Resistive Glass](#) on the website for more information.

## UL AND INTERTEK TESTED AND CERTIFIED



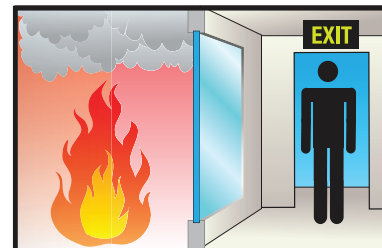
SuperLite® II-XL is listed and labeled by Intertek and Underwriters Laboratories, nationally recognized testing laboratories approved by OSHA.

## APPROVALS

UL 9, UL 10B, UL 10C, UL 263, NFPA 80, NFPA 251, NFPA 252, NFPA 257, ASTM E119, ASTM E152, ASTM E163, ASTM E2074, ASTM E2010-01, CPSC 16 CFR 1201 Cat. II, ANSI Z97.1, ULC CAN4-S101, ULC CAN4-S104, ULC CAN4-S106, NFRC 100, NFRC 200, NFRC 500, ASTM C1629/C1629M, ASTM E695, ASTM D4977.

## FIRE RESISTIVE

**Contains smoke, flames and blocks the passage of radiant heat.**



## SPECIFICATIONS

**Thickness:** 1 in. (25 mm);  
1-3/4 in. (45 mm) when insulated with clear Low-E

**Weight:** 12 lbs./sq. ft. (59 kg/m<sup>2</sup>)  
in 1 in. (25 mm) profile

**Fire Rating:** 20-45 minutes with hose stream  
Meets ASTM E119 and UL 263

**Visible Transmittance:** 0.789 with clear standard; 0.883 with clear low-iron

**Impact Safety Rating:**  
CPSC 16 CFR 1201 Cat. I and II & ANSI Z97.1

**Hard Body Impact Classification:**  
ASTM C1629/C1629M Level 3

**Soft Body Impact Classification:**  
ASTM E695 Level 3

**Surface Abrasion Resistance:**  
ASTM D4977 Level 3



Contract Holder  
Contract 47QSWA20D0022



**Made in the USA**

[www.safti.com](http://www.safti.com)

**SAFTI FIRST**  
SAFETY AND FIRE TECHNOLOGY INC.

**888.653.3333**

# SuperLite® II-XL 45

**20-45 Minute  
Fire Resistant Glazing**



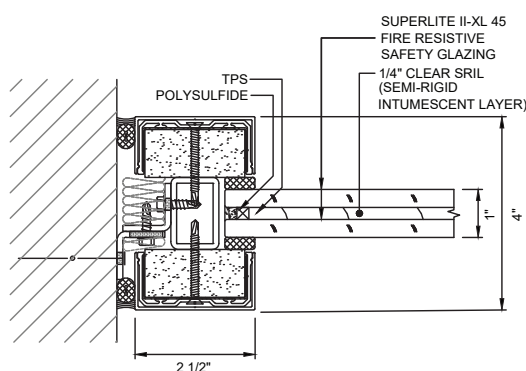
For this 1-hour corridor, the design team chose SuperLite® II-XL 45 for its superior optical clarity, CPSC Cat. II impact safety ratings, high STC ratings and full radiant heat protection at a fraction of the cost of tinted filmed or laminated ceramic used in the same application.

**Project:** High Tech Middle School in Chula Vista, CA  
**Architect:** Studio E Architects  
**Contract Glazier:** Vision Systems, Inc.  
**Products Used:** SuperLite® II-XL 45 in GPX® Builders Series Framing

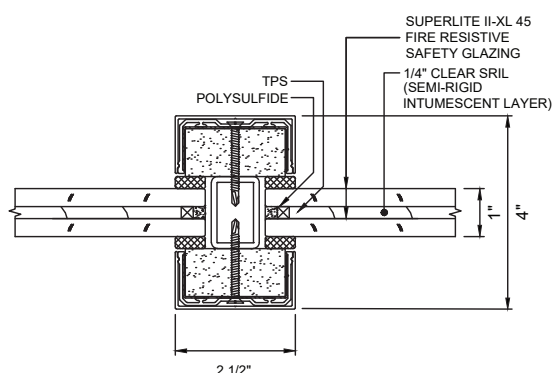
3-Part Specifications available at [www.safti.com/specifications](http://www.safti.com/specifications)

## TYPICAL DETAILS *More details available at [www.safti.com/details](http://www.safti.com/details)*

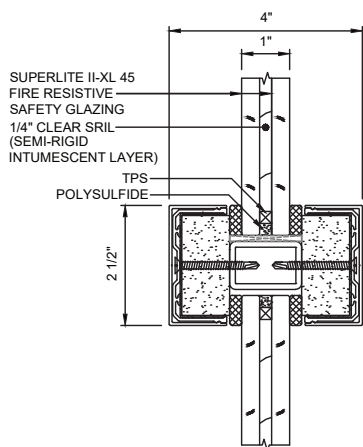
### SuperLite® II-XL 45 in GPX® Architectural Series Fire Resistant Framing



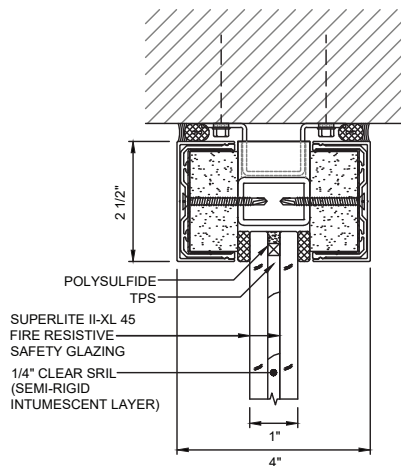
JAMB DETAIL



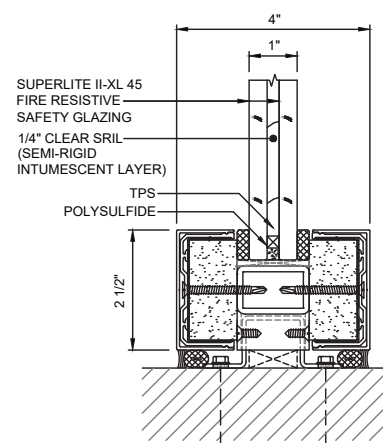
VERTICAL MULLION DETAIL



HORIZONTAL MULLION DETAIL



HEAD DETAIL



SILL DETAIL

Details not to scale.

Starphire Ultra-Clear® is a registered trademark owned by Vitro. The information provided herein is for general reference only. Please visit [www.safti.com](http://www.safti.com) for the most updated information. © SAFTI FIRST® January 2022